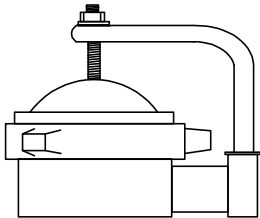
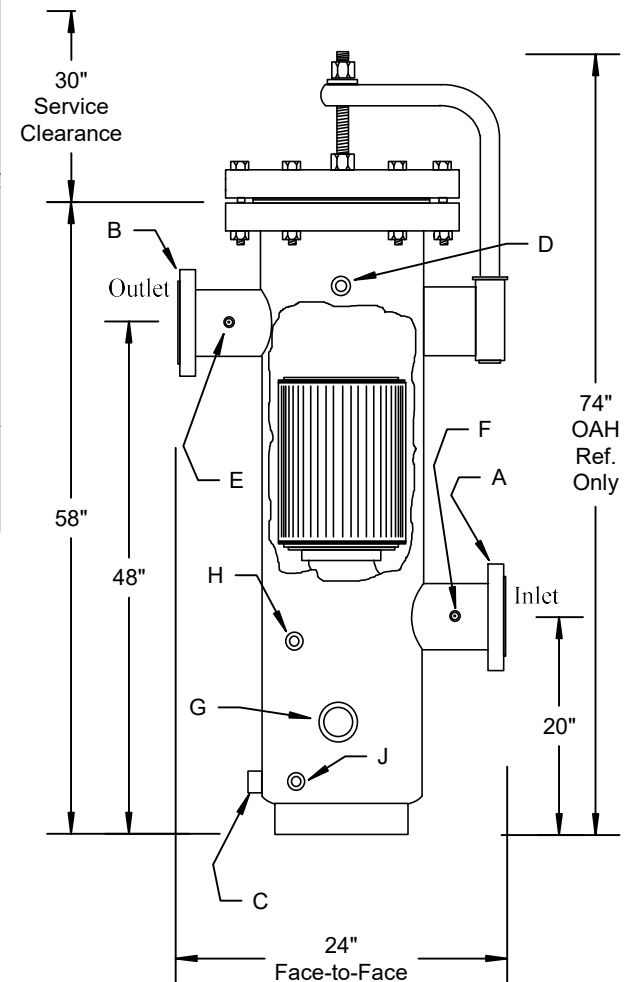


# VESSEL DATA SHEET

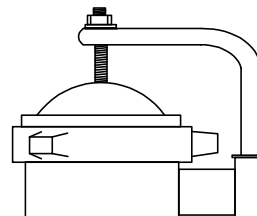
Design Parameters		Schedule of Openings					
Pressure, Max. at Inlet	740 psi	Service	See Dwg.	Qty.	Size	Rating	Type
Temperature	100 F	Inlet	A	1	6"	300# ANSI	Flange
Corrosion Allow.	0.00"	Outlet	B	1	6"	300# ANSI	Flange
Code Standard	ASME Sect. VIII, Div. 1	Drain	C	1	1"	3000#	Coupling
Stamped?	Optional	Vent	D	1	1/2"	3000#	Coupling
Operating Parameters		Press. Tap	E	1	1/4"	3000#	Coupling
Pressure, Max.	740 psi	Press. Tap	F	1	1/4"	3000#	Coupling
Temperature	100 F	Float Switch	G	1	2"	3000#	Coupling
Gas Flow Rate	2,100,000 scfh @ 740 psi	Sight Glass	H	1	1/2"	3000#	Coupling
Gas Specific Gravity	0.60	Sight Glass	J	1	1/2"	3000#	Coupling
Vessel Testing		Materials of Construction					
Hydrotest Pressure	1,110 psi	Shell	SA53B			Thickness	
Pneumatic Test Pressure	N/A	Bottom Head	SA234WPB			0.365"	
Radiograph	Optional with U-Stamp	In/Out Piping	SA53B			0.432"	
Magnetic Particle	Optional with U-Stamp	Flanges	SA105			ANSI 300#	
Dye Penetrant	Optional with U-Stamp	Couplings	SA105			3000#	
		Closure Gasket	Fiber Flat Gasket				
		Ring Base	SA53B			0.188"	
Filtration Performance		Shipping Information					
Filter Element P/N	#2035K907	Total Weight	500#				
Type of Filter Media	Borosilicate Fiberglass						
Retention Rating	0.3 micron						
Efficiency of Retention	99.9%						
No. of Elements	1						
Design Clean Press. Drop	0.33 psid						
Changeout Press. Drop	10 psid						
Closure Specifications							
Type	Blind Flange						
Gasket Type	Fiber Type, #10-300						
Type of Lifting Assistance	Hinge/Handle						
Internal Finish							
Sandblast	Light						
Oil Coat	None						
Glyptol Coat	None						
External Finish							
Sandblast	SP-10 Commercial						
Finish Coat	(2) Coats PPG						
	Grey Enamel						
	Primer/Finish						
Sump Capacity	10 gallons						

Optional Threaded Quick Opening Modco Closure





Optional Threaded  
Quick Opening  
Modco Closure



**FilterFab**  
MANUFACTURING CORPORATION

**Model C6-740F Coalescing Filter**